

pellon®

*The Magic
in the Middle*

I ♥ Pellon® Stocking

Skill Level: Beginner

Designed By
Rachael Gander
Sewn By
Rachael Gander

www.imaginegnats.com



Ready to dress up that mantle in style? The I ♥ Pellon® stocking with patchwork detail and optional embroidery, will make any mantle Santa-ready. Sample used Cherry Christmas by Aneela Hoey for Moda, Essex Linen from Robert Kaufman in black and flax and DS Quilts for JoAnn in the lining.

Fabrics Needed

Exterior fabric	1/2 yard
Lining fabric	1/2 yard
For patchwork section	Twenty-four 1-1/2" squares and one 2-1/2 x 4-1/2" rectangle of linen OR thirty-two 1-1/2" squares

Materials Needed

Pellon® TP971F Fusible Thermolam® Plus	1/2 yard
Pellon® 820 Quilter's Grid™	1/4 yard

Tools Needed

Sewing machine and related supplies
Rotary cutter and related supplies

Cutting Instructions

Cut one 2-1/2" x 4-1/2" rectangle of linen.

Cut one 3" x 6" rectangle exterior fabric.

Follow instructions on template pages to make the stocking patterns.

Cut one exterior stocking back from pattern with wrong side facing up.

Cut one exterior stocking front top using piece A from pattern with right side facing up.

Cut one exterior stocking front bottom using piece B from pattern with right side facing up.

Cut two lining pieces from stocking pattern right sides together.

Cut two Thermolam® Plus from stocking pattern right sides together.

Cut one 6" x 18" rectangle Quilter's Grid™

Place twenty-four 1-1/2" squares on the Quilter's Grid™, leaving a space in the center for the linen. If not using linen, place thirty-two squares on the grid. Fuse squares to the grid using manufacturer's instructions.

OPTIONAL: Use a blue marker to darken the tan lines of the Quilter's Grid™ for better visibility against light fabrics. Quilter's Grid™ lines are tan.

NOTE: Sample used marker to darken the tan lines.

Stitch the center horizontal seam and the three center vertical seams using a 1/4" seam allowance. Trim seams and press fabric seams open. Press grid-only seams to the side.

Place the linen rectangle in the center space and fuse to the grid.



Stitch the remaining seams using a 1/4" seam allowance. Trim seams and press open.



Center and stitch exterior pieces A and B to the top and bottom of the patchwork strip. Use the stocking pattern to measure and cut the sides of the patchwork strip to fit.

Fuse Thermolam® Plus to the front and back exterior pieces. Quilt stocking pieces as desired.

Embroider the name on the linen piece.



To make the hang loop, fold the 3" x 6" rectangle in half long wrong sides together. Press to mark the center line. Unfold.

Fold the long sides in to meet the center crease and press. Fold again along the center crease and press to form a double fold. Topstitch both long sides, close to the edge.

Pin the loop to the right side of the back of the stocking, leaving space for the seam allowance.



Place the exterior back of the stocking and the lining back right sides together, matching top edges. Stitch top edge using a 1/2" seam allowance. Press seam open.

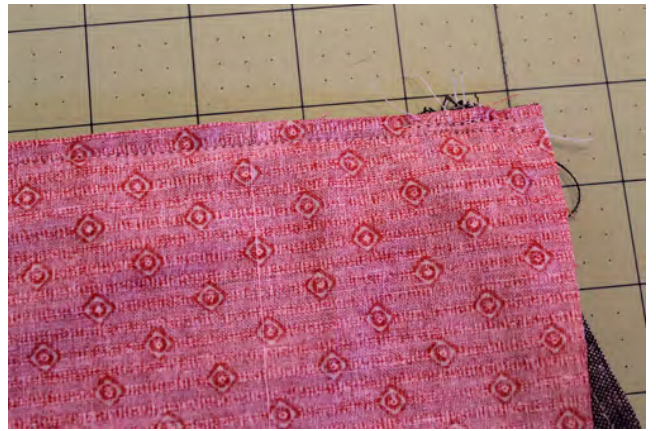
Stitch the exterior front of the stocking and the lining front in the same manner.

Place the front and back stocking pieces right sides together. Line up the center seams. Pin in place.

Stitch around the raw edges using a 1/2" seam allowance. Leave a gap in the lining to turn the stocking.

Clip corners. Trim seam allowance. Clip curves.

Turn stocking right side out and stitch opening closed.

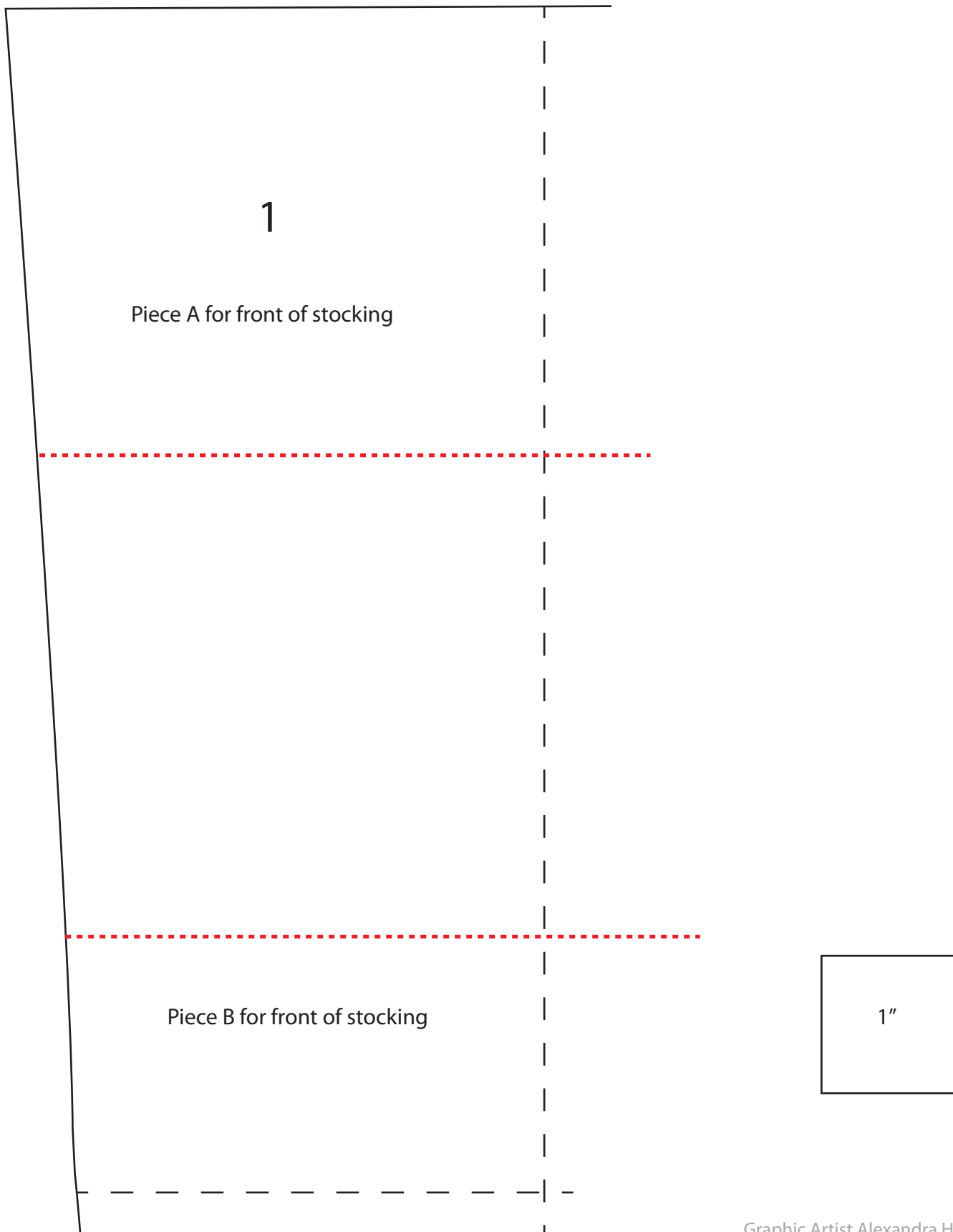


Stocking Template 1

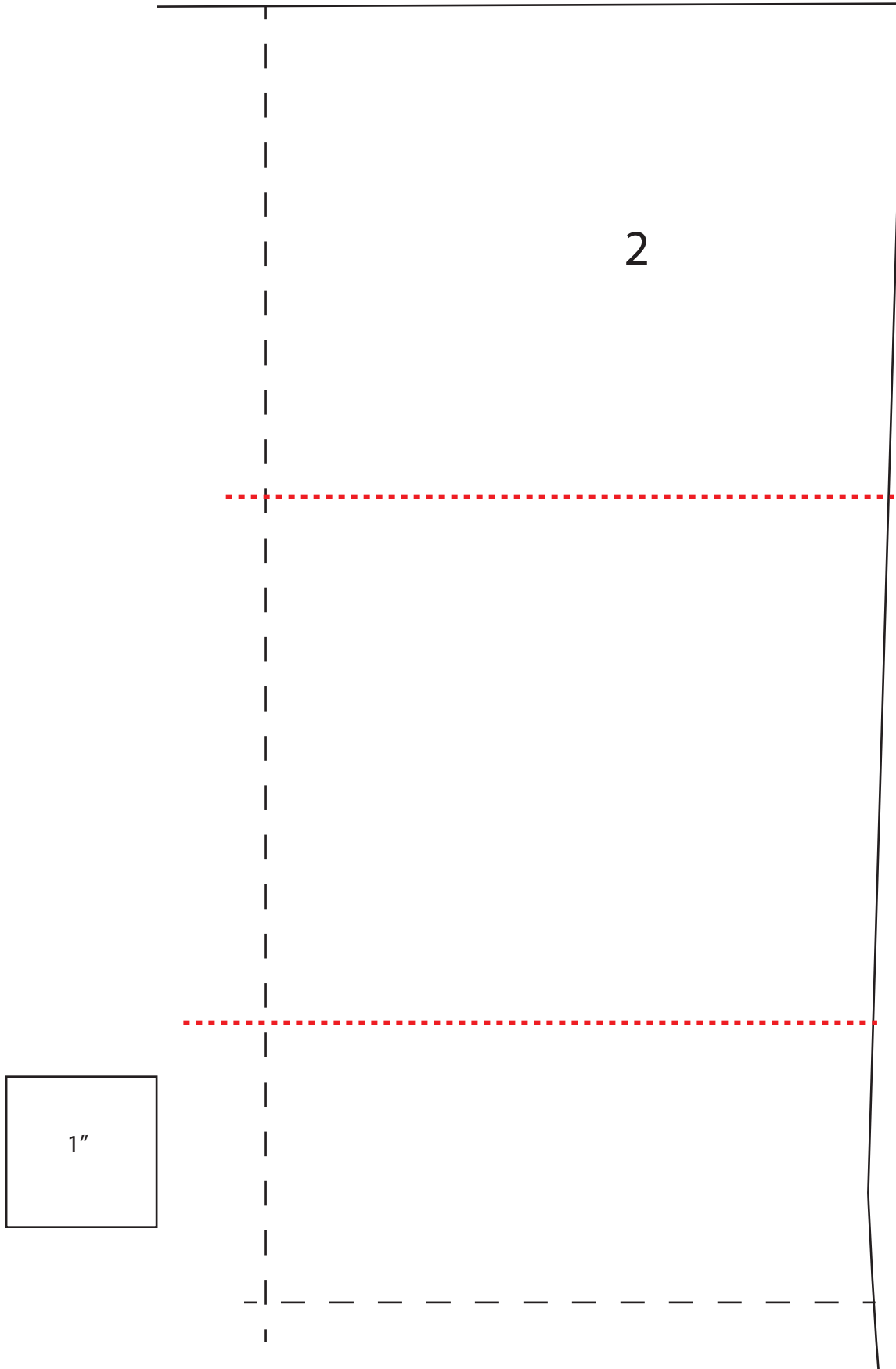
Print two sets at 100%. Check the 1" scale for size. Cut templates just outside the black dashed lines.

Place all four templates together, matching the dashed lines.

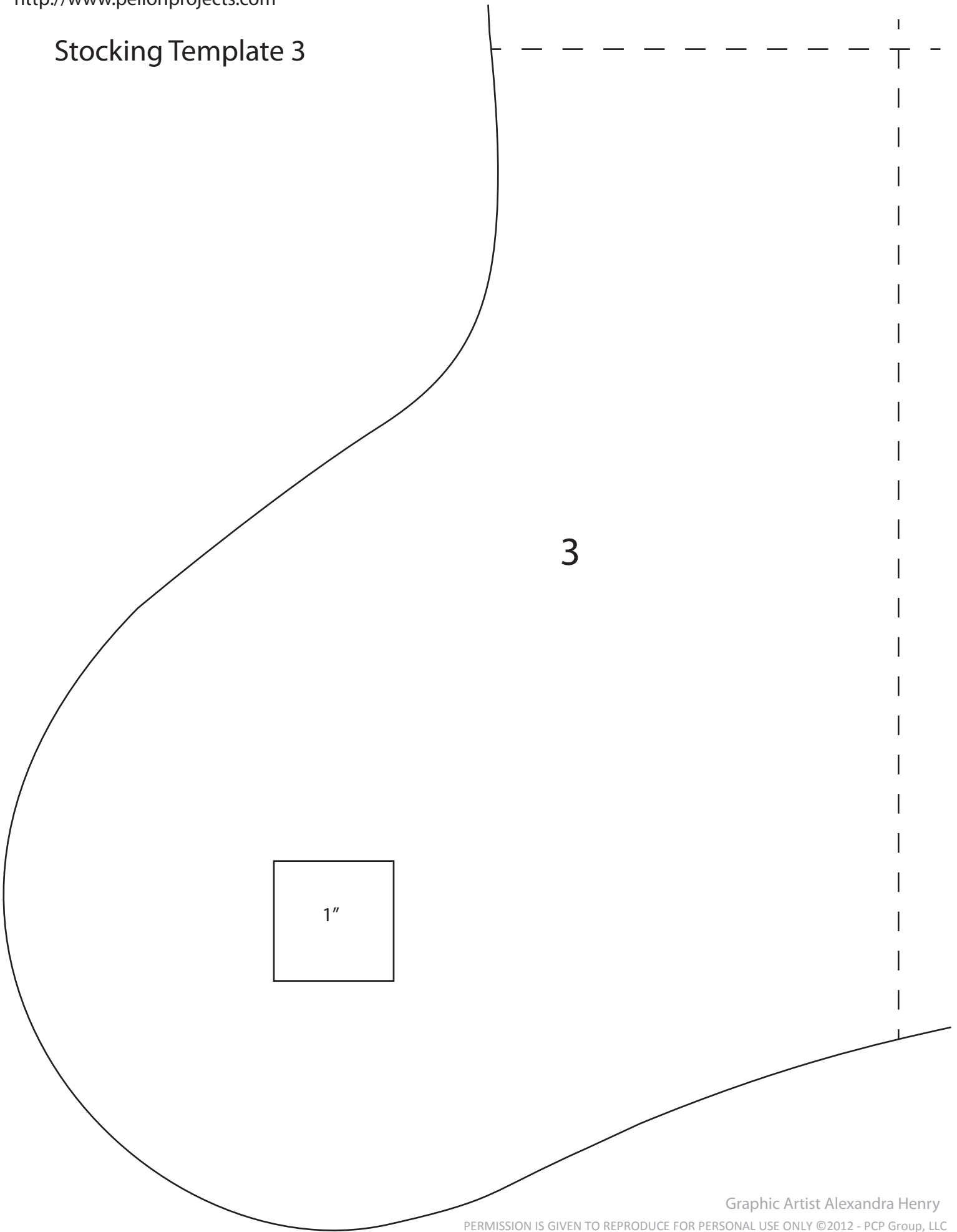
Tape together to form stocking templates. Cut out the stocking patterns. Cut the second pattern apart on the red dotted lines.



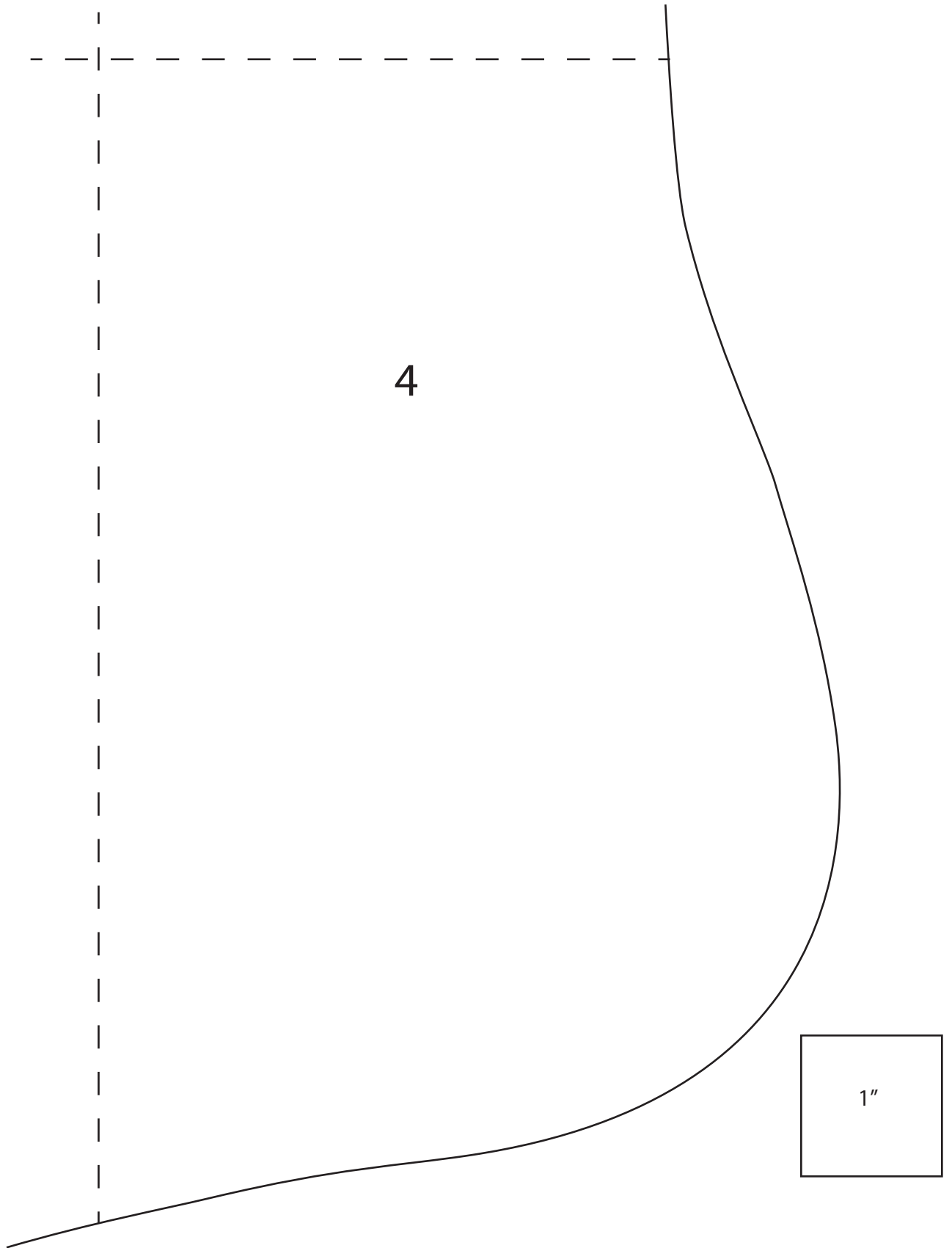
Stocking Template 2



Stocking Template 3



Stocking Template 4



Graphic Artist Alexandra Henry