

pellon[®]

*The Magic
in the Middle*

Purse-onality Skill Level: Intermediate

<http://www.pellonprojects.com>

Designed By
Karen Bennett
Sewn By
Karen Bennett

<http://www.nelliesneedlequiltpatterns.com>

A perfect sized bag for day or evening that is small but practical. Trim and fabric choices will determine use. When using specialty fabrics, the bag is perfect for bridesmaid, prom or a special event. Use cotton fabrics and the bag will thrill any little princess or her mom. Sample used fabrics from Textile Creations BeJeweled.



Fabrics Needed

Bag Body Outside	Two 9" x 14" rectangles
Bag Top Band Outside	Two 3-1/4" x 11" rectangles
Bag Lining	Two 9" x 14" rectangles
Bag Top Band Lining	Two 3-1/4" x 14" rectangles
Flowers	One 3-1/2" x 40" strip
Handle Tabs	One 4" x 16" rectangle

Materials Needed

Pellon [®] 808 Craft Fuse [™]	1 yard
Pellon [®] 987F Fusible Fleece	1/2 yard
Purse Handles	Two pieces of chain 24" in length
Square Rings	Four 1" square rings
Magnetic Snap	One set
Sequin Strand	One piece 2/3 yard in length
Buttons	Three different colored/style of 1/2" size
Toile	One 4" x 40" strip
Hot Glue or Craft Glue	
Thread	

Tools Needed

Sewing machine and related supplies
Rotary cutter and related supplies

Graphic Artist Alexandra Henry

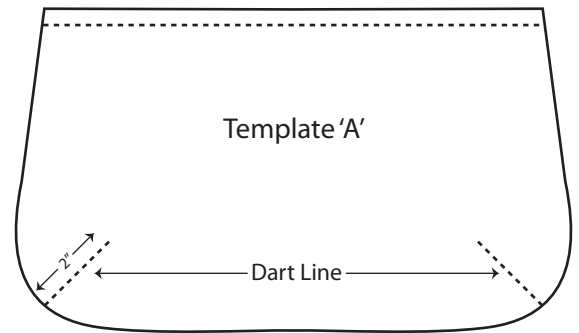
PERMISSION IS GIVEN TO REPRODUCE FOR PERSONAL USE ONLY ©2012 - PCP Group, LLC

Cutting and Assembly Instructions

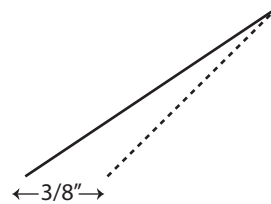
All seam allowances are 1/4".

- Cut two 9" x 14" rectangles for bag body outside.
- Cut two 3-1/4" x 11" rectangles for bag top band outside.
- Cut two 9" x 14" rectangles bag lining.
- Cut two 3-1/4" x 14" rectangles for bag top band lining.
- Cut one 4" x 16" rectangle for handle tab.
- Cut one 3-1/2" x 40" strip for flowers.

Fuse Pellon® Craft Fuse™ onto the wrong side of the two bag body pieces. Fuse Pellon® Fusible Fleece onto the wrong side of the two bag body lining pieces. Using Template A, cut out two bag bodies and two bag body lining pieces.

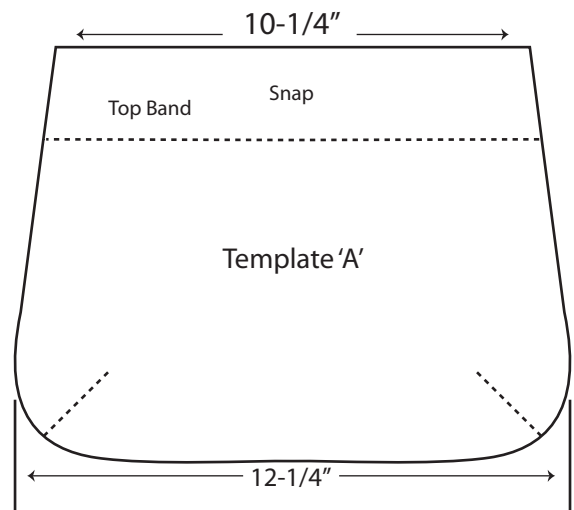


On the wrong side of all four Template A pieces, mark the 2" diagonal line that begins along the bottom edge. With right sides together, fold along the line. Starting at the raw edge and 3/8" from the fold, sew a diagonal line up to the top of the dotted line. Backstitch. Sew all four darts. Press the darts towards the center of the bag.

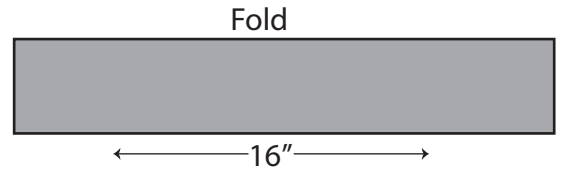


Fuse the Craft Fuse™ onto the wrong side of the two bag top band pieces and the two bag top band lining pieces. Using Template B, cut out two bag top band pieces and two bag top band lining pieces. Sew the bag top band onto both of the bag body pieces. Press toward the band.

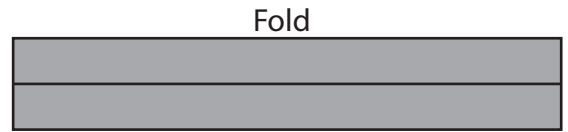
Sew the bag top band lining onto both of the bag body lining pieces. Press toward the band.



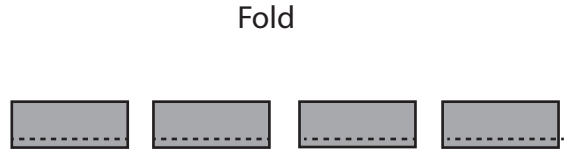
Fuse Craft Fuse™ to the wrong side of the 4" x 16" handle tab fabric. Fold the handle tab fabric in half lengthwise. Press.



Open out the handle tab. Press the long edges to the center, wrong sides together.

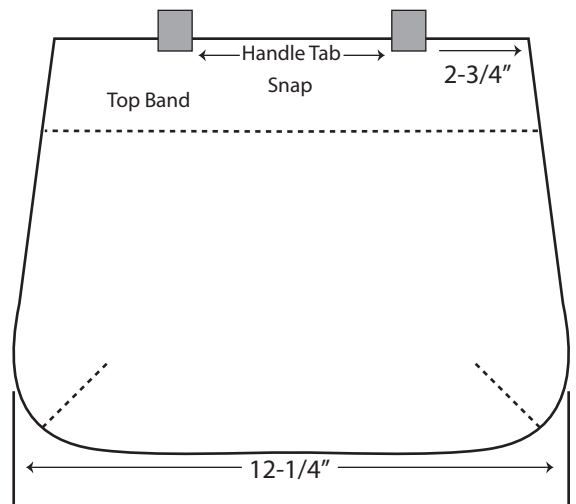


Refold the handle tab on the first fold. Sew the handle along the long edge. Cut handle tab into four equal pieces

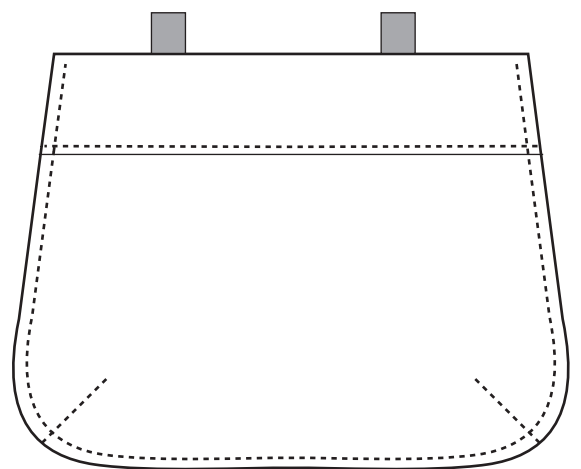


Slip a square ring onto each tab, fold in half and pin together.

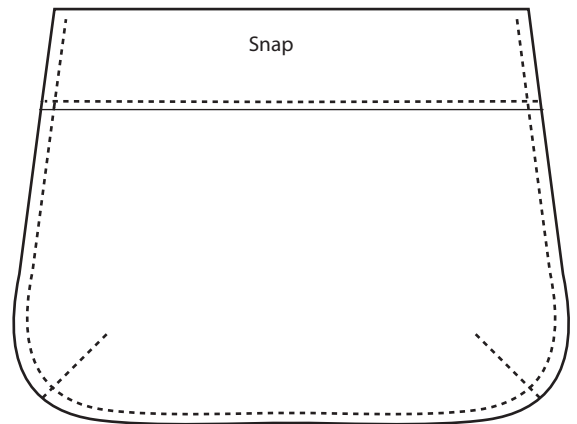
Beginning at the top outside edge of the top band, measure and mark 2-3/4" in from the side edge. Place the outside edge of the tab on the mark. Tack tabs to the band with a 1/4" seam allowance. Repeat on the other three corners.



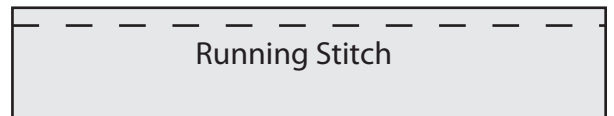
Place the bag pieces right sides together. Stitch the long curved side and bottom with a 1/4" seam allowance. Back-stitch on both ends. Repeat this step with the bag lining sections.



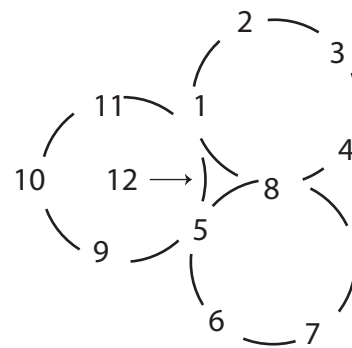
Attach the magnetic snap on the top band lining. Center the snap lengthwise and widthwise. The snap attaches on the right side of the fabric with the prongs on the wrong side.



With right sides together, stitch the long side of the 3-1/2" x 40" strip of ruffle fabric. Turn right side out. Press seam. Sew a running stitch along the seamed edge, 1/4" in from the edge.



Gather as tightly as possible. Form a figure 8 with a loop as shown, following the numbering.

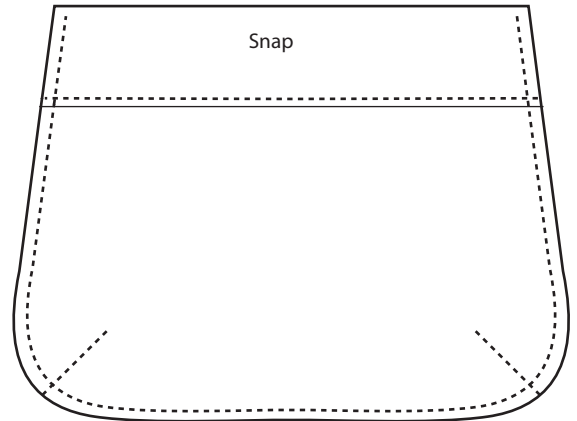


Place the flower group 2-1/2" from the side and 1-3/4" from the bottom. Hot glue the flowers down and sew buttons into the center of each flower. Gather the toile and stuff it into two of the spaces. Hot glue the toile on.



With right sides facing, place the flowered bag inside the bag lining. Match the side seams and top raw edges. Make sure the bag handle tabs are facing down between the layers. Pin around the top edge.

Stitch the top edge using a 3/8" seam allowance, leaving an opening between the handle tabs on the back of the bag.



Turn the bag right side out through the opening. Pull the handle tabs out. Push the lining down inside the bag. Press around the top edge of the bag. Slipstitch the opening closed.

Optional: Topstitch around the top of the bag.

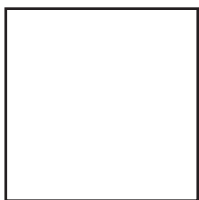
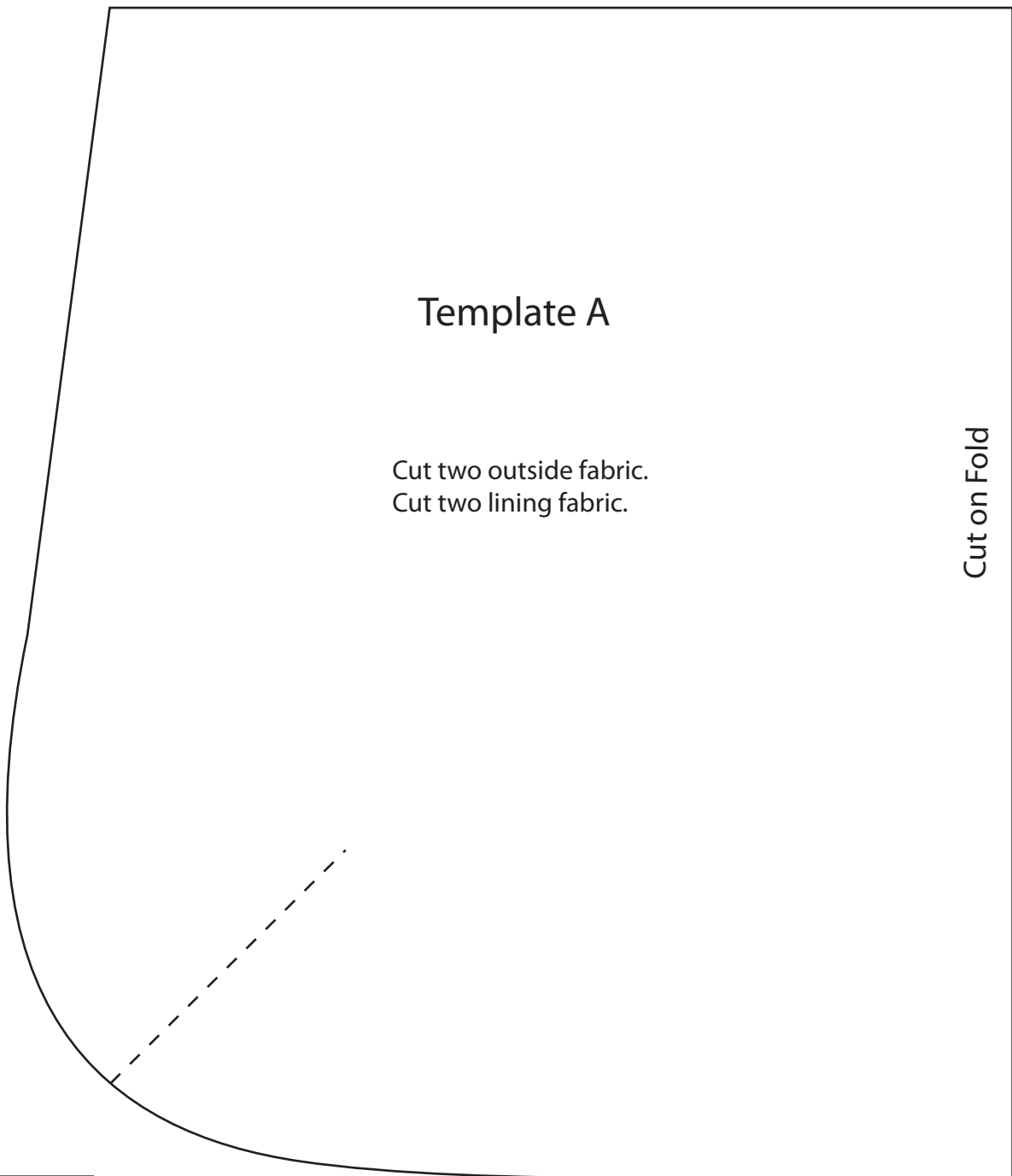
Glue the sequin strand around the seam between the bag and the band.

Attach the chain handles to the square rings.

Push out the darts to make the bottom open up.



Purse-onality Template - Set printer to 100%. Check gauge for sizing.

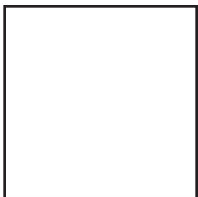
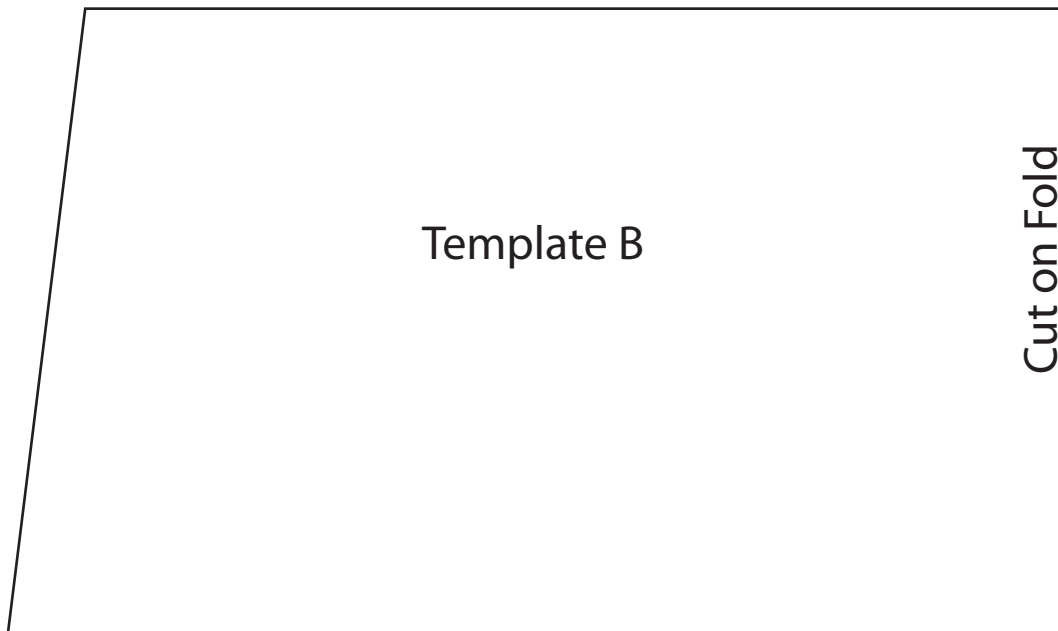


Gauge = 1"

Purse-onality Template B - Set printer to 100%. Check gauge.

Cut two outside fabric.

Cut two lining fabric.



Gauge = 1"