

pellon[®]

*The Magic
in the Middle*

Valentine Basket and Card

Skill Level: Beginner

Designed By
Kiera Vanella

<http://kiki-itssewkiki.blogspot.com/>



Make this great basket to hold all your Valentines and decorate your tabletop.

Fabrics Needed

Valentine Fabrics	Five 2 1/2" x 8" rectangles
Borders	Fat Quarter
Handles	Two 3" x 5" rectangles
Lining	Fat Quarter
Fabric for Card	Two 6" squares

Materials Needed

Pellon [®] #987F Fusible Fleece	14" x 12"
Pellon [®] #2300 Stitch-N-Tear [®] Lite	6" square
Pellon [®] #70 Peltex Ultra-Firm Sew-In Stabilizer	6" square
Thread	
Embroidery Thread	

Tools Needed

Iron
Scissors
Pinking Scissors
Pencil

Graphic Artist Alexandra Henry
© 2011 Alexandra J. Henry

PERMISSION IS GIVEN TO REPRODUCE FOR PERSONAL USE ONLY ©2011 - PCP Group, LLC

Basket Cutting and Assembly

Cut five strips of valentine fabric 2 1/2" x 8".
Cut two strips of border fabric 2 1/2" x 8".
Cut two strips of border fabric 2 1/2" x 14 1/2".
Cut two pieces of handle fabric 3" x 5".
Cut two pieces for card 6" square.
Cut one piece of lining 12" x 14 1/2".

Cut one piece fusible fleece 12" x 14 1/2"
Cut one piece Stitch-N-Tear Lite 6" square.
Cut one piece Peltex 6" square

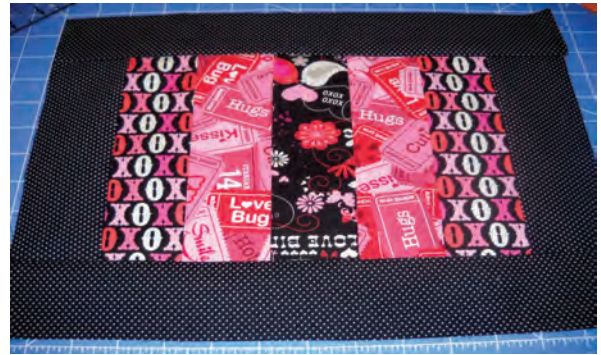
Place the strips of valentine fabric right sides together.
Stitch using a 1/4" seam allowance. Press seams in one direction.



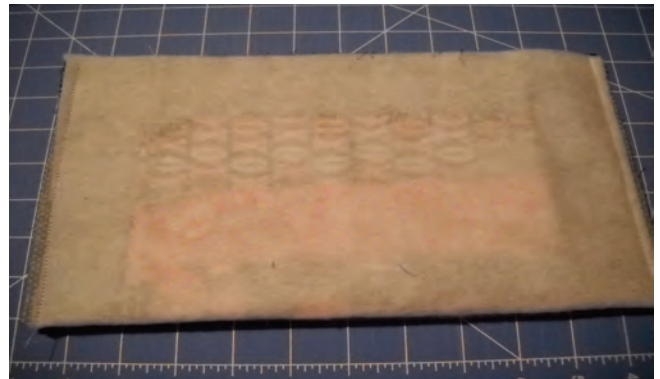
Sew the side border strips onto this unit using a 1/4" seam allowance. Press towards border strips. Sew the top and bottom border using a 1/4" seam allowance. Press towards top and bottom border.



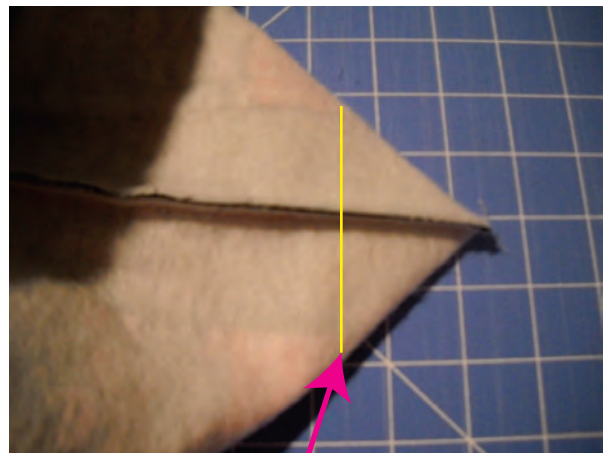
Fuse the Pellon® Fusible Fleece to the wrong side of the basket.



Fold the basket in half on the 14 1/2" side, right sides together, matching the raw edges. Stitching using a 1/4" seam allowance. Press a crease into the bottom of the piece to create a line for the center of the bottom.



To make the bottom flat, take one corner of the bottom and press flat, matching the side seam to the crease on the bottom of the basket. Flatten basket corner to form a point. Using a ruler, measure in 1 1/2" from point. Draw a line across point.

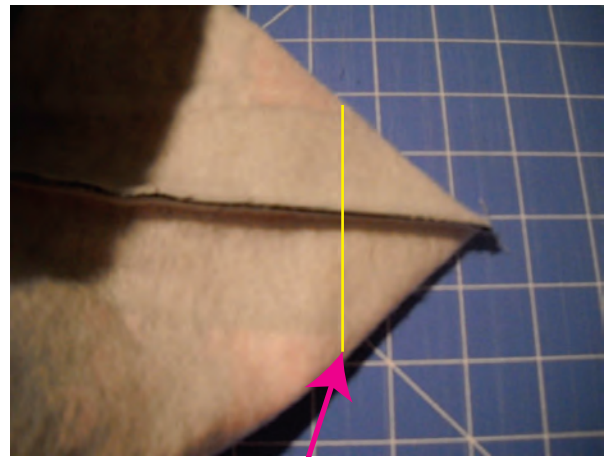


Drawn Line

Stitch on the drawn line. Cut seam allowance to 1/4". Repeat with other corner.



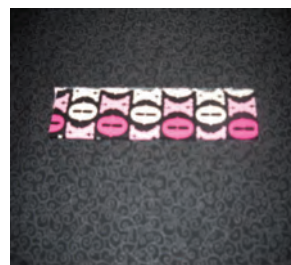
Fold lining in half on the 14 1/2" side, matching the raw edges of the 12" sides. Sew side seams using a 1/4" seam allowance, leaving a 2" gap midway on one of the side seams. Box the corners for the lining the same way as for the basket exterior.



Drawn Line

Handles

Fold handle pieces in half lengthwise wrong sides together. Press to crease. Open and fold each edge toward the center, wrong sides together. Press. Fold in half and press. Topstitch 1/4" in from both long edges.



Pin handles to side seams of right side of basket, matching raw edges. Insert basket into lining right sides together matching side seams. Pin into place.

Stitch top of basket around top edge using a 1/4" seam allowance.

Turn basket right side out through opening in lining. Slipstitch opening closed.

Topstitch around top of basket 1/4" from top edge.



Fabric Card Instructions

Layer a 6" square of fabric and Pellon® Stitch-N-Tear® Lite according to machine's instructions.

Embroider selected design.

Tear away the stabilizer and trim embroidery leaving 1/2" to 1" on all sides of the design. Add a small border of coordinating fabric around design if desired.



Cut backing fabric and the ultra firm stabilizer to the same size as the embroidery.

Layer card backing fabric wrong side up, stabilizer, then card right side up.

Stitch on all sides using a 1/2" seam allowance. Trim all sides with pinking shears.

Optional: Use a zig zag stitch instead of cutting with pinking shears.

